



BIKE LOUD PDX

BIKELOUDPDX@GMAIL.COM

@BIKELOUDPDX

FACEBOOK.COM/BIKELOUD

Dec 19, 2017

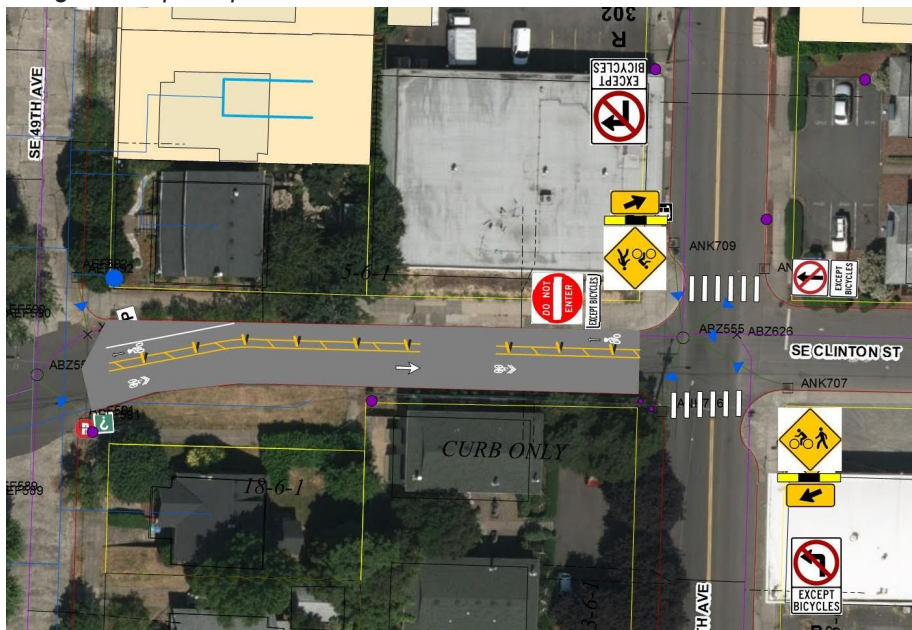
To: Ms. Dana Dickman

Cc: Director Leah Treat
Commissioner Dan Saltzman
Richmond Neighborhood Association

Dear Ms. Dickman:

As construction winds down on the housing under construction at SE Clinton & 50th, we are still unclear on what traffic mitigation is planned for this section of the greenway. We initially brought up concerns that the access point to the underground parking garage is located on SE Clinton, a popular neighborhood greenway, and the greenway would experience higher volumes of auto traffic as a result. Scott Batson had a proposal that we reviewed and found to be an agreeable treatment, although we would prefer a design that diverts both eastbound and westbound car traffic. We would like an update on where these traffic mitigation ideas are in the design process.

Design concept for partial diversion



While this construction has been underway there has been an effective diverter at SE 50th, blocking car traffic from travelling on Clinton. Since drivers are already used to this traffic pattern, we would like to see infrastructure put in place prior to or simultaneously with the road re-opening. This is a great opportunity to easily support Greenway policy, improve our infrastructure, and eliminate the need to revisit this intersection in the near future.

We look forward to your response, or a response from the traffic engineer assigned to this project.

Sincerely,

Emily Guise, co-chair, BikeLoudPDX

Ted Buehler, co-chair BikeLoudPDX

Catie Gould, co-chair, BikeLoudPDX